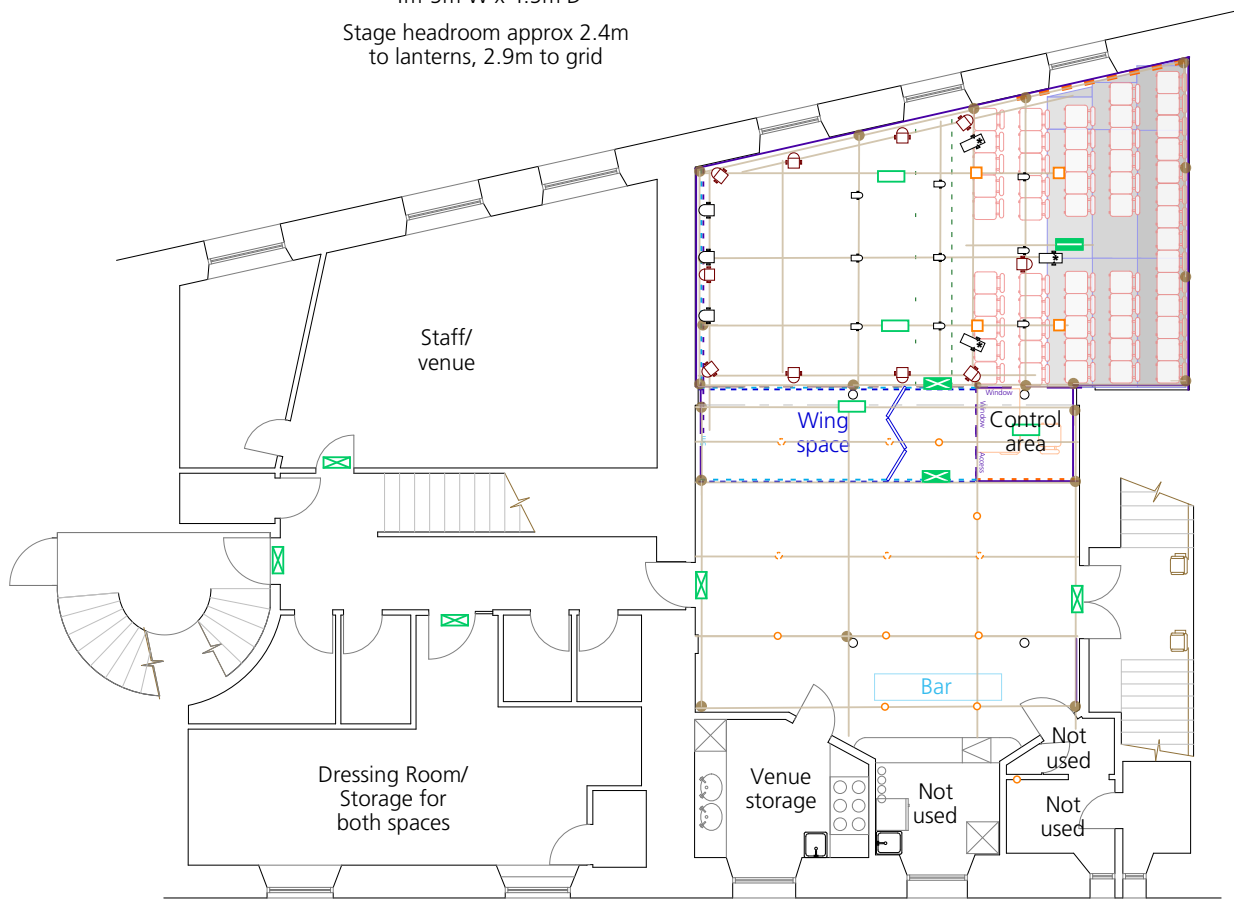


Stage area approx
4m-5m W x 4.5m D

Stage headroom approx 2.4m
to lanterns, 2.9m to grid



lighting

- LED Par or wash unit (RGB or RGB+)
- 500W/575W/Source 4 mini profile
- Profile (MR16 12V or 300/500/575W)
- re-focusable and re-gellable lantern

key

- escape route sign (maintained)
- bulkhead (maintained)
- bulkhead (non-maintained)
- visible only when layout with more than 60 seats
- houselight
- working light (white)
- working light (blue)
- fittings/furniture
- truss
- scaffolding at grid height
- scaffolding upright (M)
- scaffolding upright (m)
- scaffolding handrail and knee rail
- wooden solid balustrade and handrail
- black drape
- openable black drape not on track
- openable black drape on track
- tab track
- white cloth
- FOH display board/partition
- limit of playing area
- no scenic pieces downstage of this line
- seats (fixed)
- seats (can be removed by arrangement)
- pillar
- moveable screen
- rostra/steps/steeldeck heights**
- +180mm
- +360mm
- +450mm
- +600mm

C aquila
Roman Eagle Lodge
Level +1
Studio

This plan is indicative and subject to change
All critical details should be verified in situ

For further information please contact C venues on
+44 (0)131 581 5520 or email production@cvenues.com

Copyright © C ARTS | C venues – plan updated 6 October 2023

Scale
0 1m