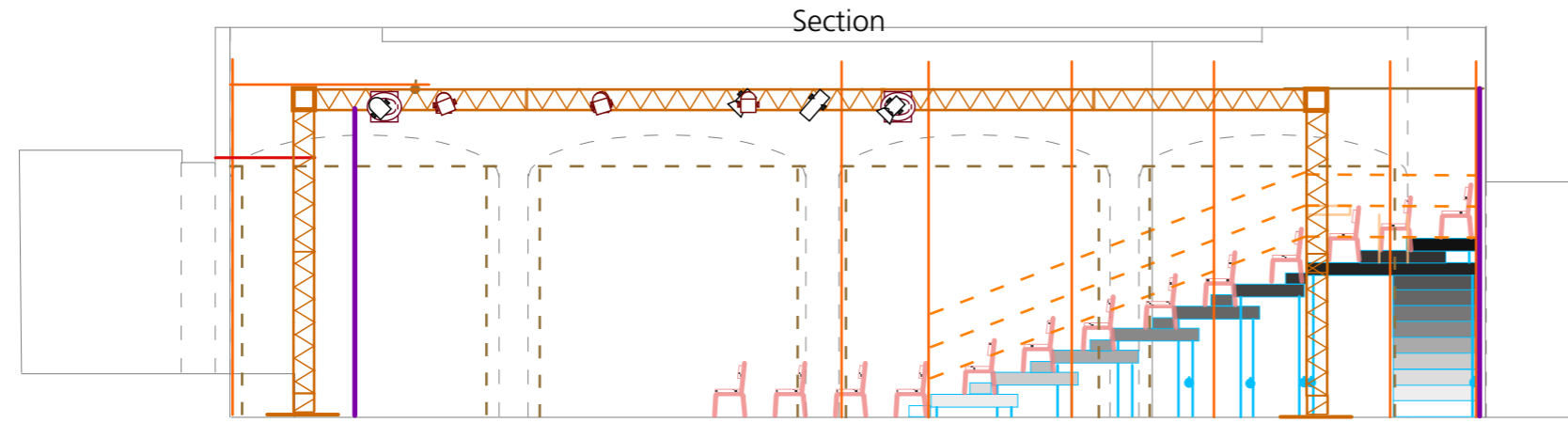


key

- Moving light (CMY zoom spot) available by arrangement
- Basic LED Par or wash RGB or RGB+
- LED Par or wash light RGB or RGB+
- 500W/575W/650W Profile wide angle zoom
- 500W/650W Fresnel or wash light
- Par 56 500W MFL or Source Par MFL 575W
- Par 64 CP62 1kW
- re-focusable and re-gellable lantern
- 203 gel number (Lee Filters/Rosco E-Colour)
- #367 gel number (Roscolux/Rosco Supergel)

- escape route sign (maintained)
- bulkhead or downlight (maintained)
- bulkhead (non-maintained)
- houselight
- working light (white)
- working light (blue)
- fittings/furniture
- internal screen/display board
- truss
- scaffolding at grid height
- scaffolding upright
- handrail
- black drape
- openable black drape
- openable black drape on track
- seats (fixed)
- seats (removable by arrangement)
- seats (can be added by arrangement)

End-on format
This is the standard format for this space



Default format: end-on format with seats 530mm wide
 Stage size options approx 9.1m W x 4.8m / 5.6m / 6.4m / 7.2m / 8m D
 Seating approx 115 / 131 / 147 / 163 / 179 depending on stage size
 Stage headroom approx 4m to lanterns, 4.25m to bottom of truss, 4.55m to lighting bars, 5m to ceiling

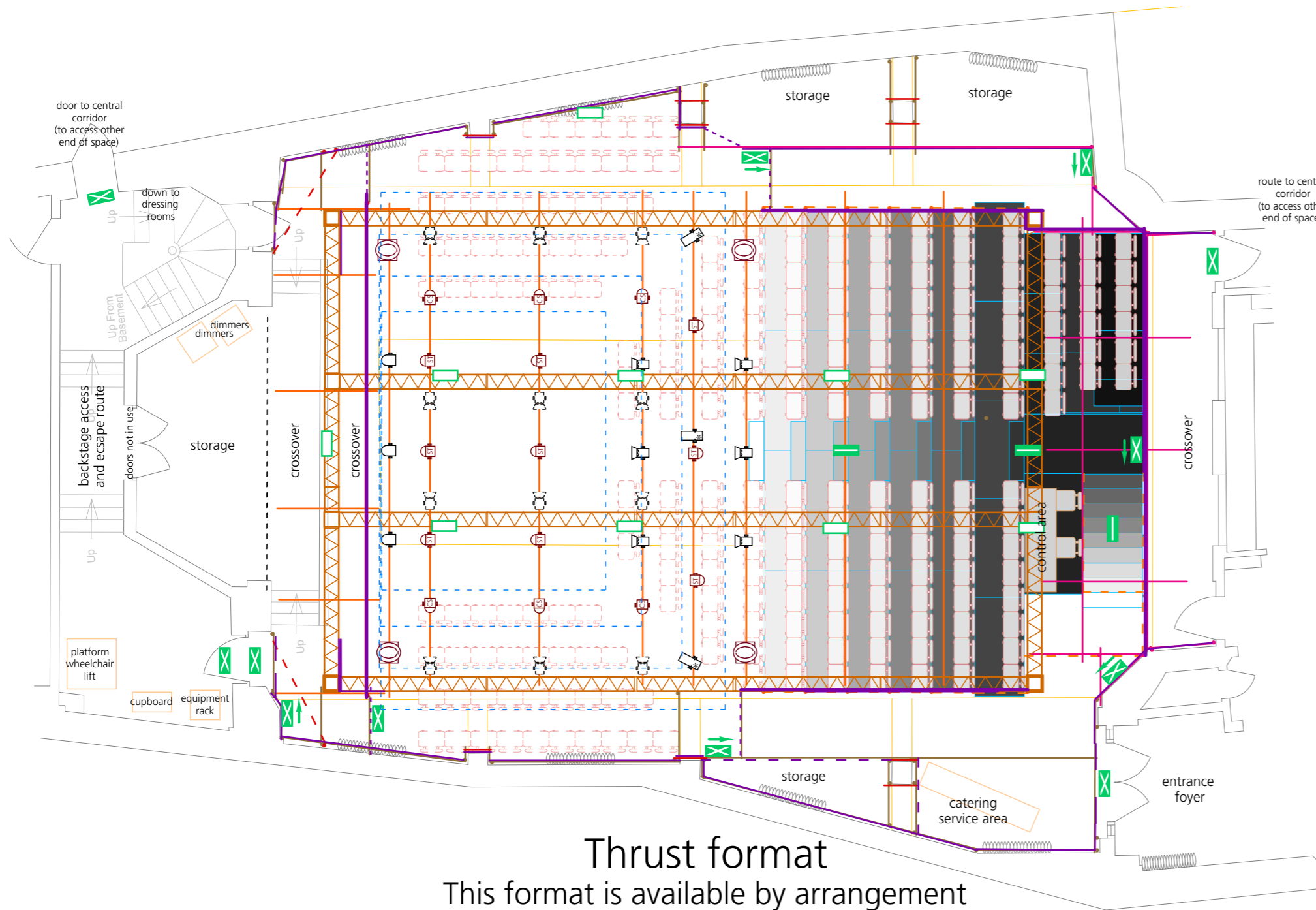
C aurora
main house

This plan is indicative and subject to change
All critical details should be verified in situ

For further information please contact C venues on
+44 (0)131 581 5520 or email production@cvenues.com

Copyright © C ARTS I C venues – plan updated 6 October 2023

Approximate
Scale
0 1m

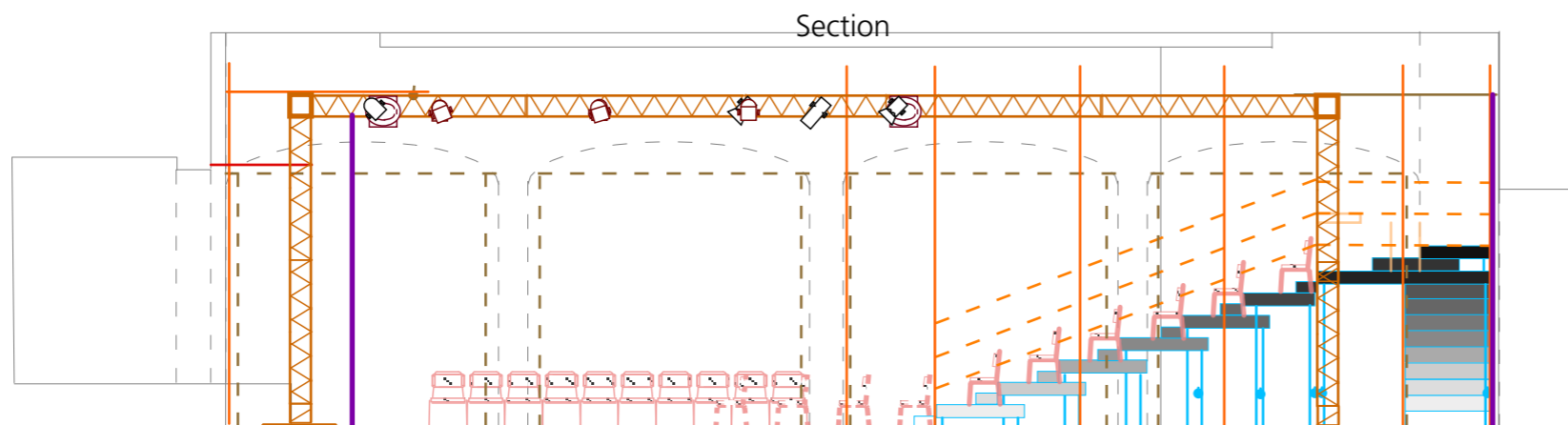


Thrust format
This format is available by arrangement

key

- Moving light (CMY zoom spot) available by arrangement
- Basic LED Par or wash RGB or RGB+
- LED Par or wash light RGB or RGB+
- 500W/575W/650W Profile wide angle zoom
- 500W/650W Fresnel or wash light
- Par 56 500W MFL or Source Par MFL 575W
- Par 64 CP62 1kW
- re-focussable and re-gellable lantern
- gel number (Lee Filters/Rosco E-COLOUR)
- gel number (Roscolux/Rosco Supergel)

- escape route sign (maintained)
- bulkhead or downlight (maintained)
- bulkhead (non-maintained)
- houselight
- working light (white)
- working light (blue)
- fittings/furniture
- internal screen/display board
- truss
- scaffolding at grid height
- scaffolding upright
- handrail
- black drape
- openable black drape
- openable black drape on track
- seats (fixed)
- seats (removable by arrangement)
- seats (can be added by arrangement)



Alternative format by arrangement: thrust format with seats 530mm wide
 Stage size options approx 5.7m / 7.2m / 8.9m / 10.5m W x 4.6m / 5.8m / 6.2m / 7m D
 Seating approx 151 / 183 / 209 / 229 depending on stage size
 Stage headroom approx 4m to lanterns, 4.25m to bottom of truss, 4.55m to lighting bars, 5m to ceiling

This plan is indicative and subject to change
 All critical details should be verified in situ

For further information please contact C venues on
 +44 (0)131 581 5520 or email production@cvenues.com

Copyright © C ARTS | C venues – plan updated 6 October 2023

Approximate
 Scale