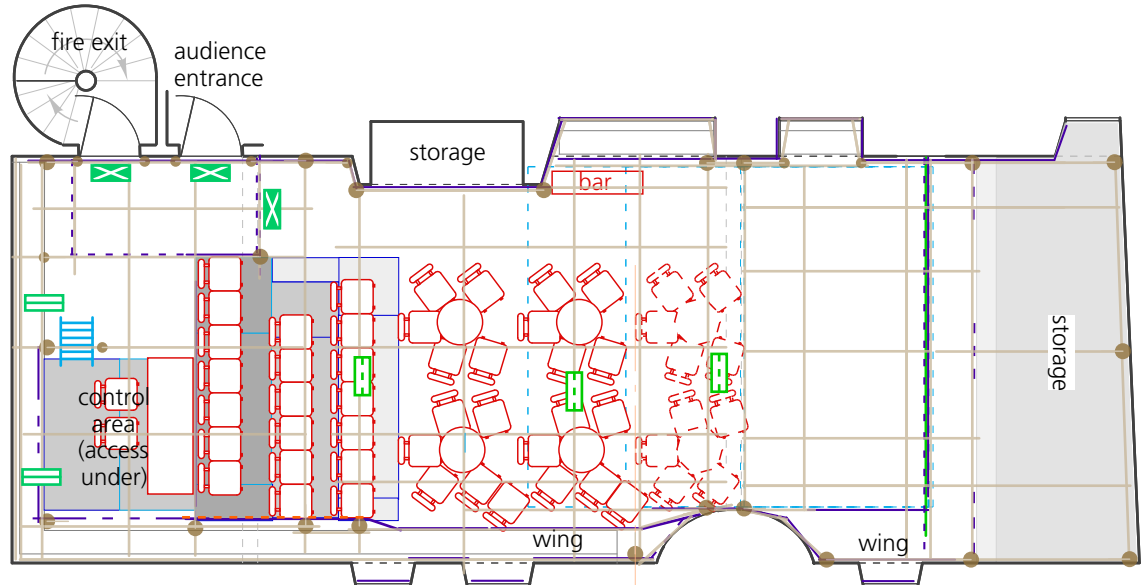
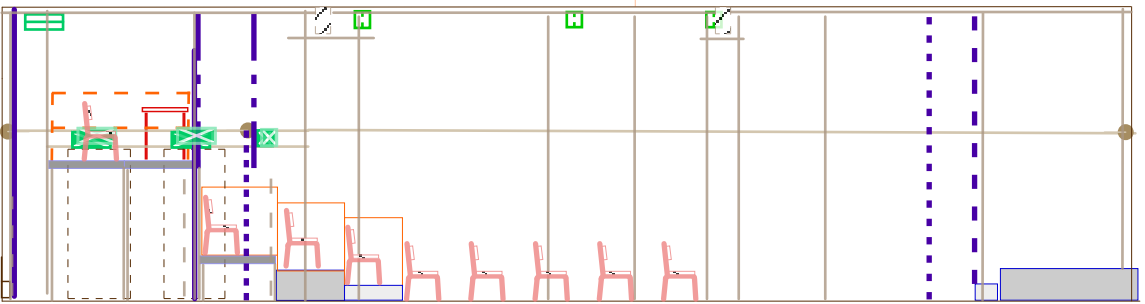


Studio format
Options of:
(a) 36 seats approx with stage size approx 5.3m deep x 4.5m wide
(b) 44 seats approx with stage size approx 4.45m deep x 4.5m wide
(c) 52 seats approx with stage size approx 3.6m deep x 4.5m wide
(d) 59 seats approx with stage size approx 2.75m deep x 4.5m wide



Studio cabaret format
(e) 32 seats approx with stage size approx 5.3m deep x 4.5m wide
(f) 42 seats approx with stage size approx 4m deep x 4.5m wide
(g) 52 seats approx with stage size approx 2.5m deep x 4.5m wide



Section
ceiling height approx 3.9m

- key**
- rostra at 200mm
 - rostra at 400mm
 - deck at 600mm
 - black drape at high level only
 - black drape
 - openable black drape on track
 - openable black drape not on track
 - scaffolding at grid height
 - scaffolding handrail and knee rail
 - wooden solid balustrade and handrail
 - scaffolding standard (M)
 - scaffolding standard (m)

- escape route sign (maintained)
- taped in bulkhead downlighter (maintained)
- black box aisle downlighter (maintained)
- bulkhead (maintained)
- bulkhead (non-maintained)
- houselight

Other variations on the layout shown may be possible – All variations must be agreed with the licensing authority before use
Higher capacity layouts have restricted sightline to floor

This plan is indicative and subject to change
All critical details should be verified in situ

For further information please contact **C venues** on +44 (0)131 581 5520 or email production@cvenues.com

Copyright © **C ARTS** | **C venues** – plan updated 6 October 2023



C cubed
studio format
(end-on layout options)

lighting

- Profile (MR16 12V or 300/500/575W)
 - Par 56 500W MFL or equivalent
 - Birdie MR16 12V 38° or equivalent
 - LED Par or wash light RGB or RGB+
- by arrangement, these channels can be made available for repatching re-focusable and re-gellable lantern