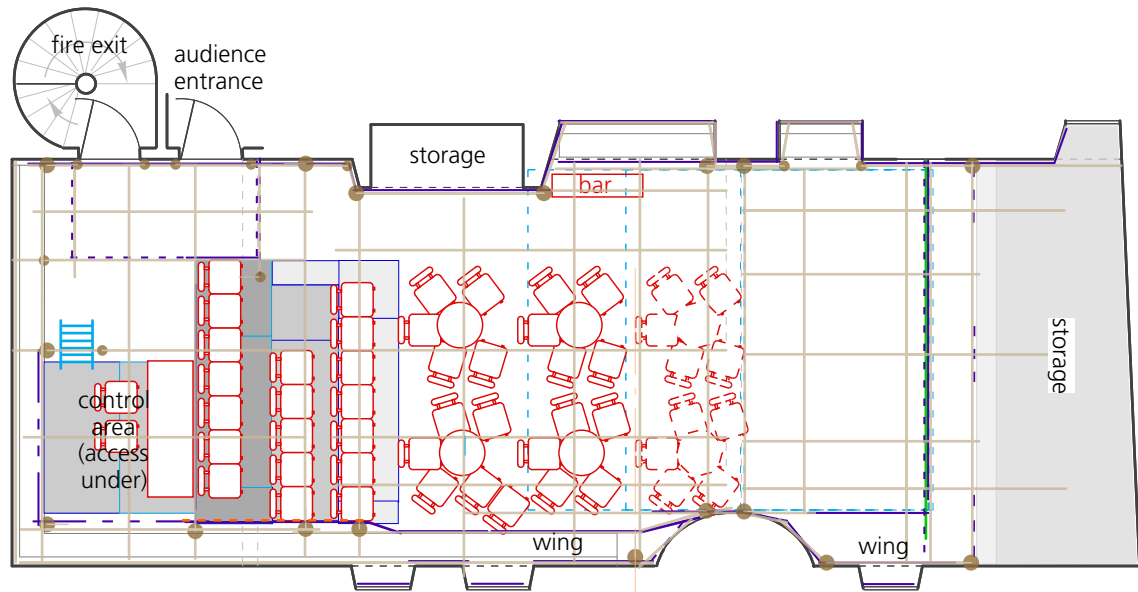


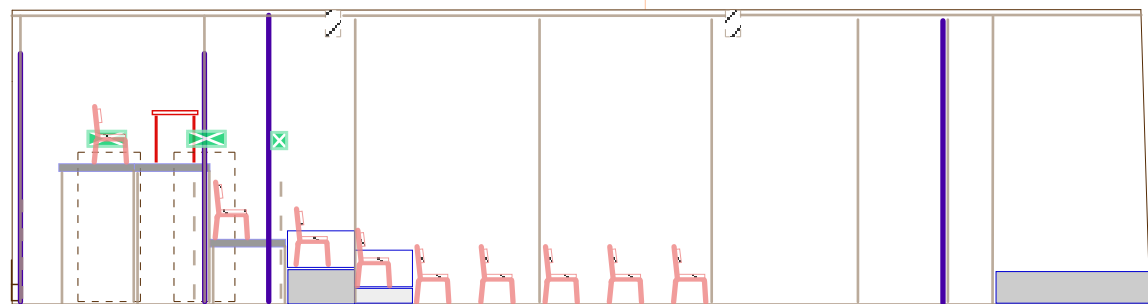
Studio format

- Options of:
 (a) 35 seats approx with stage size approx 5.3m deep x 4.5m wide
 (b) 43 seats approx with stage size approx 4.45m deep x 4.5m wide
 (c) 51 seats approx with stage size approx 3.6m deep x 4.5m wide
 (d) 58 seats approx with stage size approx 2.75m deep x 4.5m wide



Studio cabaret format

- (e) 30 seats approx with stage size approx 5.3m deep x 4.5m wide
 (f) 40 seats approx with stage size approx 4m deep x 4.5m wide
 (g) 50 seats approx with stage size approx 2.5m deep x 4.5m wide



Section
ceiling height approx 3.9m

lighting

- Profile (MR16 12V or 300/500/575W)
- 300W Fresnel
- Source Par WFL 375W
- Birdie MR16 12V 36°
- LED Profile RGB+
- LED Par or wash light RGB or RGB+

- 203 gel number (Lee Filters/Rosco E-Color)
- #367 gel number (Roscolux/Rosco Supergel)
- 101-102 by arrangement, these channels can be made available for repatching
- * re-focusable and re-gellable lantern

key

- rostra at 200mm
- rostra at 400mm
- rostra at 600mm
- black drape at high level only
- black drape
- openable black drape on track
- openable black drape not on track

- scaffolding at grid height
- scaffolding handrail and knee rail
- wooden solid balustrade and handrail
- scaffolding standard (M)
- scaffolding standard (m)

- escape route sign (maintained)
- taped in bulkhead downlighter (maintained)
- black box aisle downlighter (maintained)
- bulkhead (maintained)
- bulkhead (non-maintained)

- houselight

other variations on the layout shown may be possible – all variations must be agreed with the licensing authority before use
 higher capacity layouts have restricted sightline to floor

C venues accepts no liability for any inaccuracies
 This plan is provisional and subject to change

For further information please contact C venues on +44 (0)131 581 5520 or email production@cvenues.com

Copyright © C venues – plan updated 24 July 2022

Ccubed
studio format
(end-on layout options)

Scale
0 1m