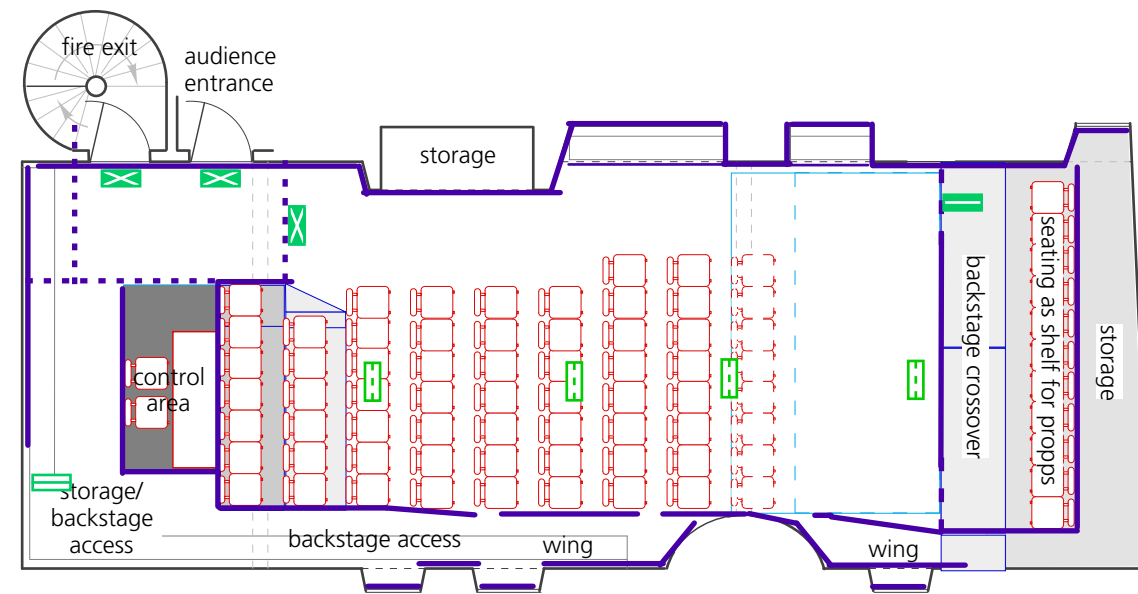
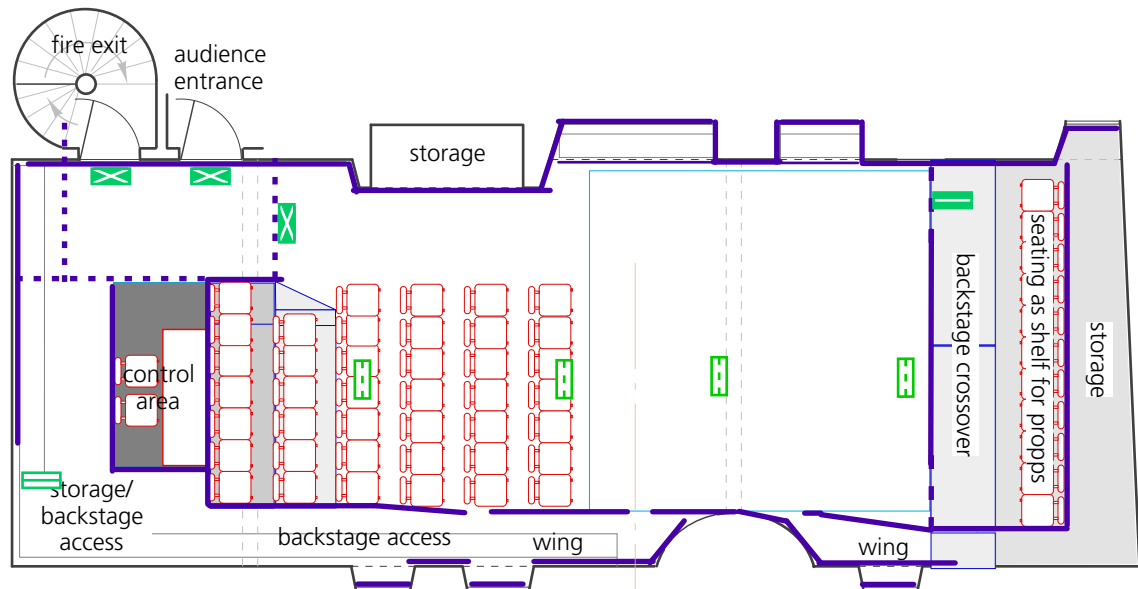


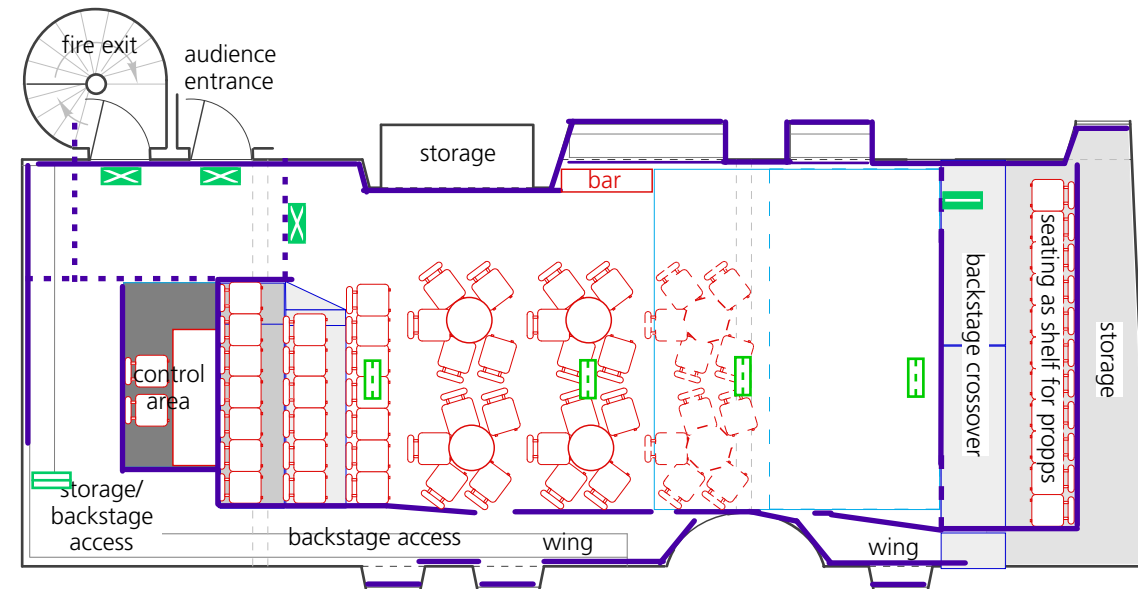
**Studio format A
(end-on layout)**
34 seats approx
stage size approx
5.4m deep x 4.5m wide



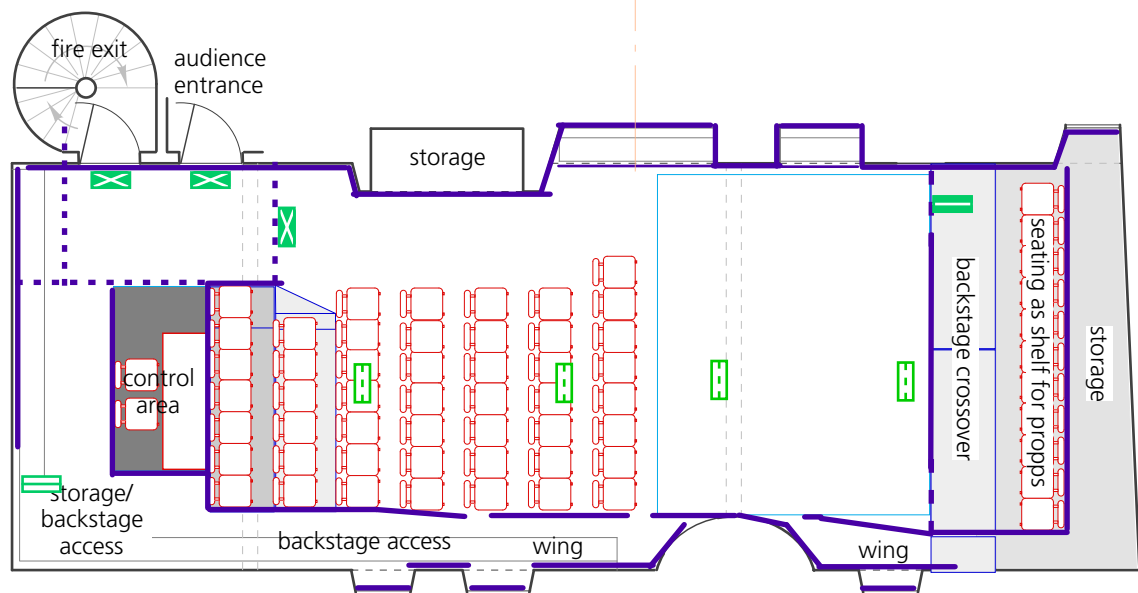
**Studio format D/E
(end-on layout)**
Format D
57 seats approx
stage size approx
2.85m deep x 4.5m wide
Format E
65 seats approx
stage size approx
2.0m deep x 4.5m wide



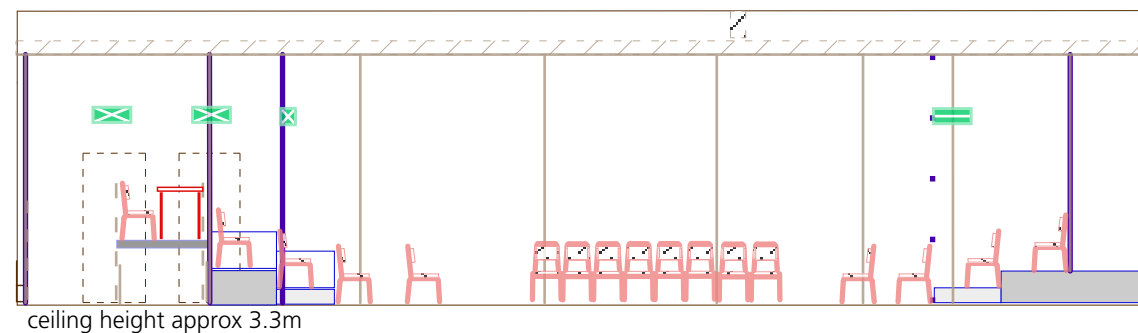
**Studio format B
(end-on layout)**
41 seats approx
stage size approx
4.55m deep x 4.5m wide



**Studio cabaret
format F/G
(end-on layout)**
Format F
40 seats approx
stage size approx
3.75m deep x 4.5m wide
Format G
50 seats approx
stage size approx
2.25m deep x 4.5m wide
Optional bar in space



**Studio format C
(end-on layout)**
48 seats approx
stage size approx
3.7m deep x 4.5m wide



**Section
showing thrust
layout**

- rostra at 200mm
- rostra at 400mm
- rostra at 600mm
- black drape
- openable black drape
- scaffolding upright
- scaffolding at grid height
- scaffolding waist and knee rails

other variations on the layout shown may be possible – all variations must be agreed with the licensing authority before use
higher capacity layouts have restricted sightline to floor

C venues accepts no liability for any inaccuracies
This plan is provisional and subject to change

For further information please contact **C venues** on +44 (0)131 581 5520 or email production@cvenues.com

Copyright © **C venues** – plan updated 30 December 2019

Scale
0 1m