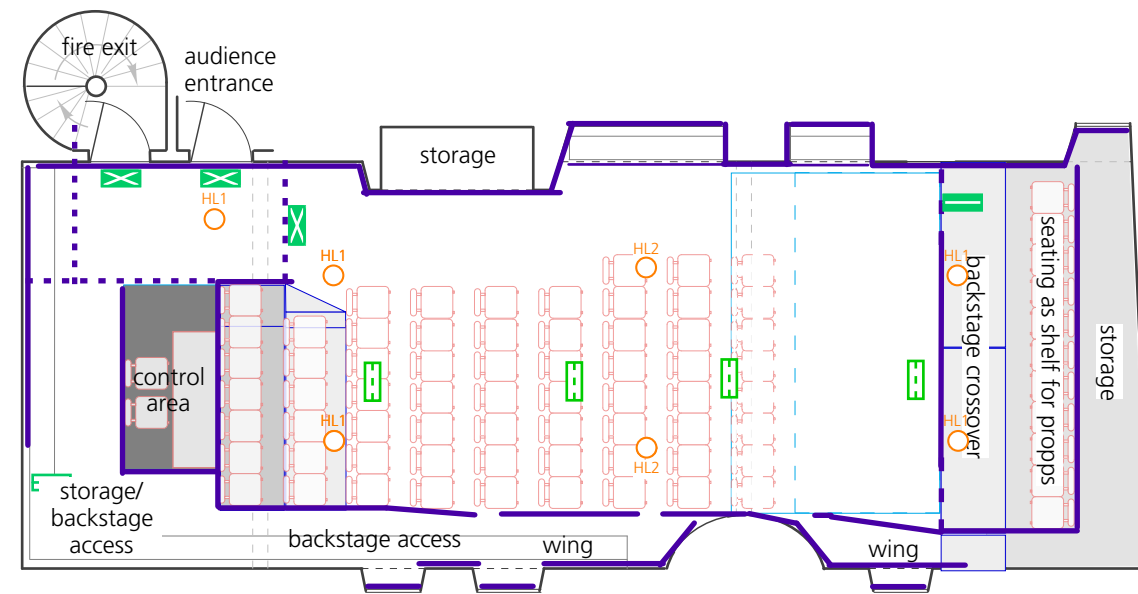
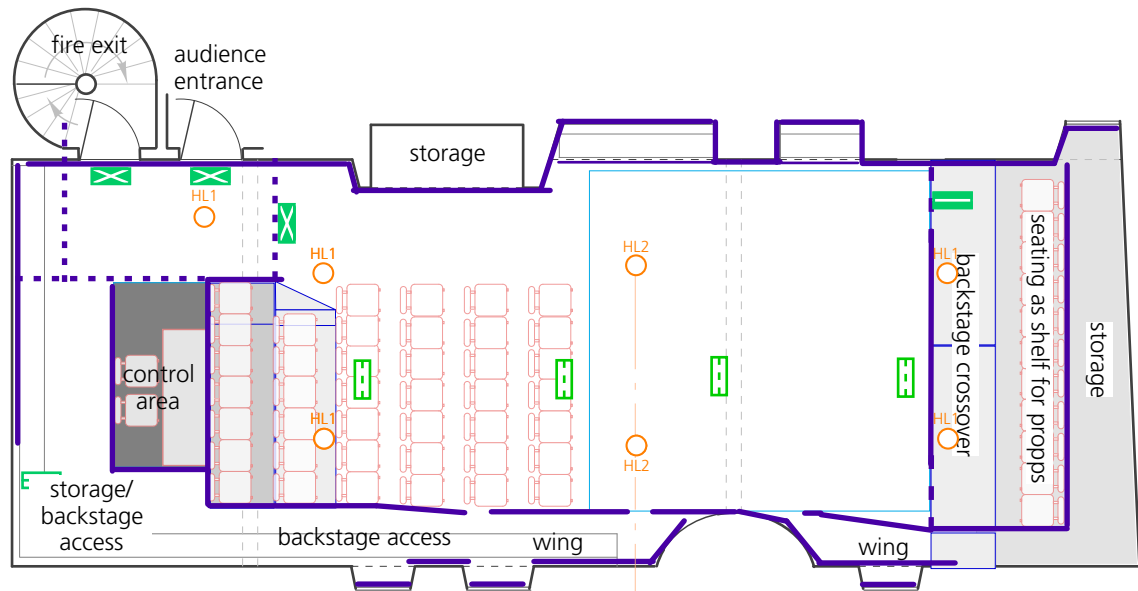


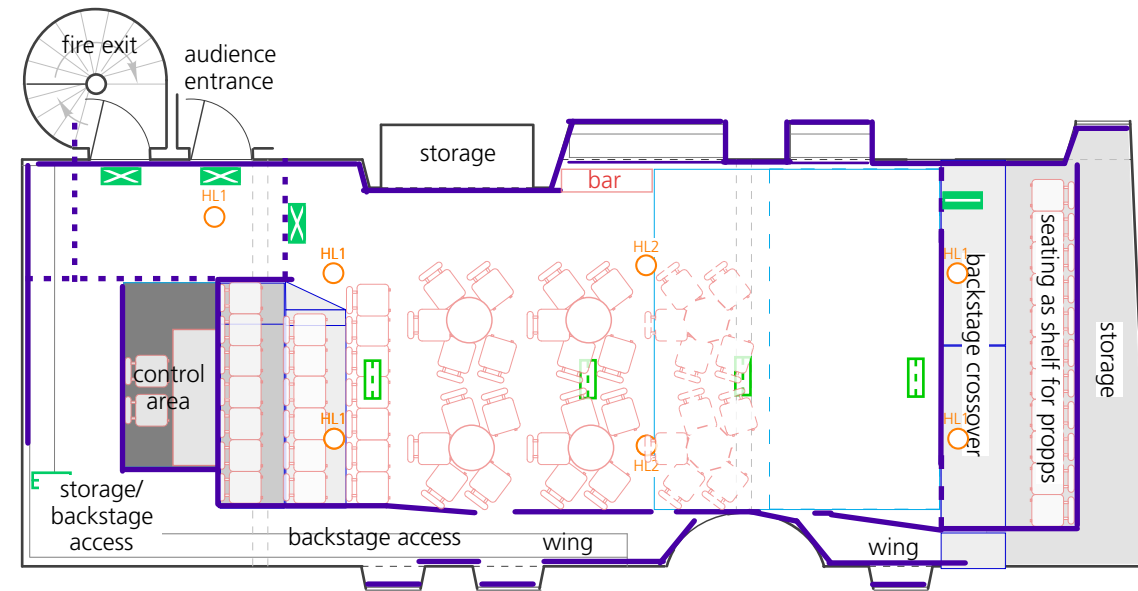
Studio format A (end-on layout)
34 seats approx
stage size approx
5.4m deep x 4.5m wide



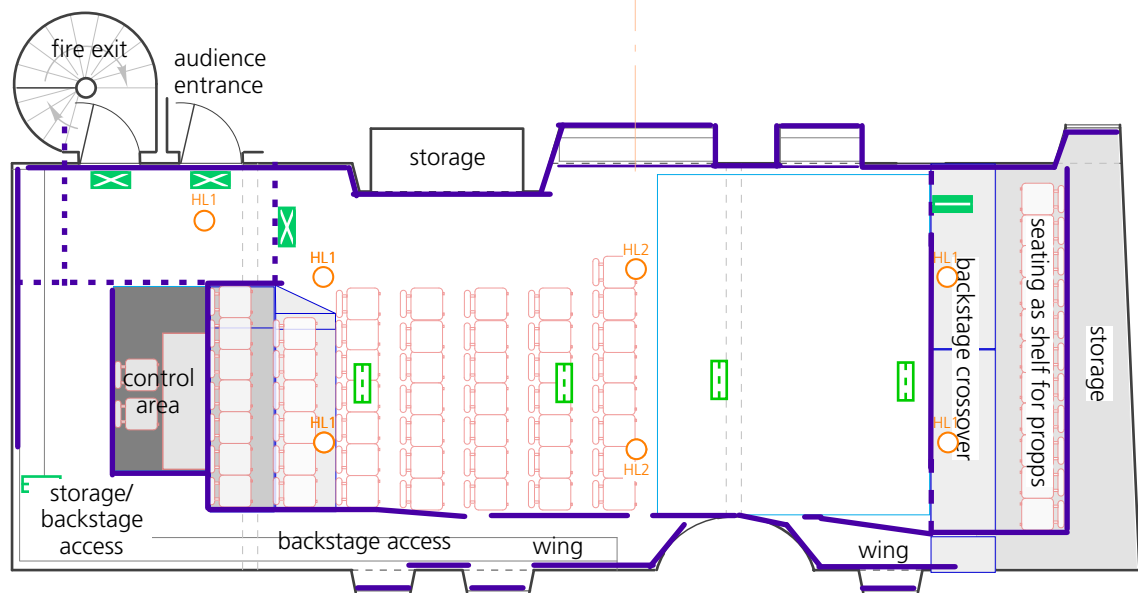
Studio format D/E (end-on layout)
Format D
57 seats approx
stage size approx
2.85m deep x 4.5m wide
Format E
65 seats approx
stage size approx
2.0m deep x 4.5m wide



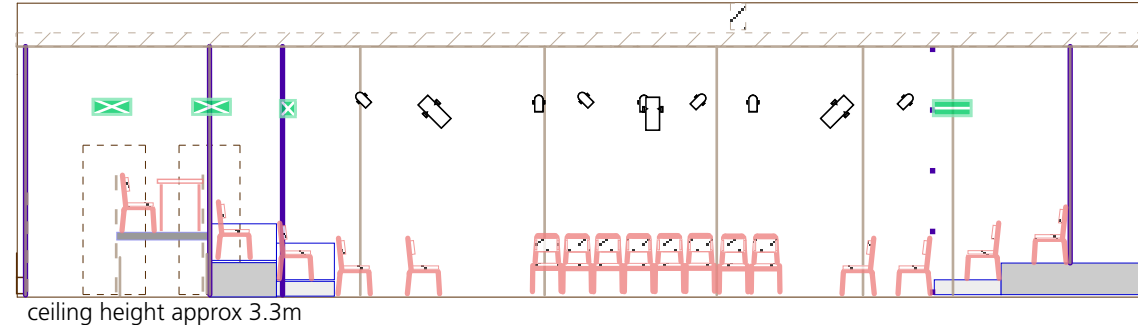
Studio format B (end-on layout)
41 seats approx
stage size approx
4.55m deep x 4.5m wide



Studio cabaret format F/G (end-on layout)
Format F
40 seats approx
stage size approx
3.75m deep x 4.5m wide
Format G
50 seats approx
stage size approx
2.25m deep x 4.5m wide
Optional bar in space



Studio format C (end-on layout)
48 seats approx
stage size approx
3.7m deep x 4.5m wide



Section showing thrust layout
ceiling height approx 3.3m

Ccubed
studio format
(end-on layout options)

lighting

- Profile (MR16 12V or 300/500/575W)
- 300W Fresnel
- Source Par WFL 375W
- Birdie MR16 12V 36°
- LED Profile RGB+ 50° or similar
- LED Par or wash light RGB or RGB+
- gel number (Lee Filters/Rosco E-Color)
- gel number (Roscolux/Rosco Supergel)
- by arrangement, these channels can be made available for repatching
- re-focusable and re-gellable lantern

- rostra at 200mm
- rostra at 400mm
- rostra at 600mm
- black drape
- openable black drape
- scaffolding upright
- scaffolding at grid height
- scaffolding waist and knee rails

- escape route sign (maintained)
- taped in bulkhead downlighter (maintained)
- black box aisle downlighter (maintained)
- bulkhead (maintained)
- bulkhead (non-maintained)
- houselight

other variations on the layout shown may be possible – all variations must be agreed with the licensing authority before use
higher capacity layouts have restricted sightline to floor

C venues accepts no liability for any inaccuracies
This plan is provisional and subject to change

For further information please contact **C** venues on +44 (0)131 581 5520 or email production@cvenues.com

Copyright © **C** venues – plan updated 30 December 2019

